

Friends of the Alberta Jubilee Auditoria Society

Announces

A Call for Submissions

The Friends of the Alberta Jubilee Auditoria Society is pleased to announce a call for submissions: if you are an artist interested in showing your work in the Alcove Gallery, please complete a submission according to the guidelines below

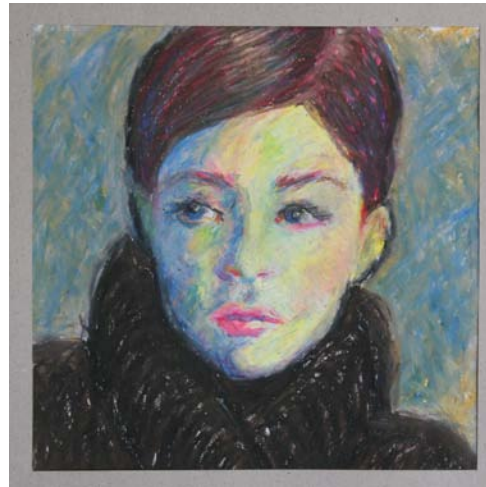
Exhibition space is provided on 1st Balcony of the Southern Alberta Jubilee Auditorium. Interested artists should be prepared to participate in an “artist-in-residence” program as well – at a minimum giving one community engagement presentation per three-month installation. This is an opportunity to exhibit in an established public and cultural facility. Group shows are welcome, and individuals may be partnered so that there is 2 - 3 artists’ work on display.

The Northern Alberta Jubilee Auditorium has an extensive collection of world renowned art by Alberta artists, and we are pleased to provide this opportunity for emerging artists as well.

Paintings from the 2008/2009 Series



*JANE ROMANISHKO, CALGARY SKETCH CLUB
POPPIES AND LEMONS*



*KIM GLENN
003*

Call for Submissions

ART EXHIBITIONS for SOUTHERN ALBERTA JUBILEE AUDITORIUM

SUBMISSION GUIDELINES- VISUAL ARTS

Exhibition space is provided in the Alcove Gallery located on 1st Balcony. There is also the possibility for exhibition space in the much larger lower level lobby. Artwork should be suitable for a public facility and will be on display for approximately 3 months or longer.

REQUIRED DOCUMENTATION

1. PROPOSAL (maximum 1 page) outlining your exhibition.
2. CURRICULUM VITAE (maximum 2 pages) summarizing relevant training, artistic accomplishments and public presentations of work.
3. ARTIST'S STATEMENT/BIOGRAPHY (maximum one page)
4. IMAGE AND PRICE LIST for insurance purposes only.
5. SUPPORT MATERIAL: Submit a CD with a maximum of 10 JPEG images (300 dpi and sized to 800 pixels maximum). All images must be numbered and labeled.

GENERAL GUIDELINES

Due to the number of submissions received, the quantity of support material is restricted. Please keep your submissions within the stated limits. Materials in excess of requirements may disqualify an application.

1. All documentation should be typed, in an easy to read font, no less than 12pt. in size.
2. Use only 8.5 x 11 inch white paper, one-sided, with a one-inch margin on all sides.
3. Each document should be clearly labeled with the artist's name, contact information including: email address, mailing address, phone number and title of the document at the top of the page. Page numbers may be used.
4. Submissions should be of three-dimensional or two-dimensional wall hanging art

EVALUATION

Submissions are evaluated by a Jury Selection Committee from the Jubilee Auditorium. The committee makes recommendations based on the quality of presentation of the application including all supporting documentation. Applicants should be aware that samples of work submitted are a significant factor in determining exhibition selection, therefore please ensure the quality on your electronic submission closely represents the quality of your work.

The Jury Selection Committee and the contents of proposals submitted to the Jubilee Auditorium, remain confidential.

ADMINISTRATION

The work presented in a proposal must be that of the submitting artist. When selected for an exhibition, the Artist signs a contract, obliging them to participate in the installation and removal of the exhibition, on a pre-determined date and time.